



Enriching Lives

Add **power, pace**
and **portability**
to dewatering

Kirloskar

DWSS

Series

Dewatering Submersible Pump



KIRLOSKAR BROTHERS LIMITED – DISTRIBUTION SECTOR

Kirloskar DWSS Series

Dewatering Submersible Pump

Kirloskar DWSS Series dewatering submersible pumps add convenience and efficiency to removing groundwater or surface water from construction sites, mine shafts, quarries or draining water from flooded basements.

The pump is totally encased in a stainless steel body to provide high resistance to corrosion. Dual sealing by a mechanical process shields the pump's interior from moisture and water seepage. Positioning the suction at the lower edge of the pump enables it to remove water up to the bottom-most level, making it convenient for applications even in tight enclosures.

The pump also features a robust construction and class-leading electrical components, reflecting quality and durability that consumers have come to expect from Kirloskar Brothers Limited – one of India's leading manufacturers of pumps.



Fully Stainless Steel Pump

The entire pump is built with stainless steel, right from the body to the impeller and shaft, making it lightweight and resistant to corrosion.



Dual Mechanical Seal

The pump is sealed mechanically from both inside and outside, preventing electrical and water leakage during its operation and enhancing pump life.



Bottom Suction

Positioning the suction at the bottom edge of the pump facilitates greater removal of water, right up to the bottom level.



Compact Design

Light weight, compact size and ease of handling makes the pump highly portable for use in diverse locations.



Dual ball bearing

The pump employs dual ball bearings to greatly reduce rotational friction as well as offer better support to radial and axial loads.



Class 'F' Insulation

All electrical parts are shielded with Class "F" insulation, thereby protecting electrical components from damage in any environment.



Product Snapshot:

Range and Technical Specification

Head	: 3 to 42 metres
Capacity	: 32 to 3.9 LPS
Power Rating	: 0.75 Kw / 1 HP to 7.5 kW / 10 HP
Phase	: 3Phase (1HP & 2 HP also available in 1 Phase)
RPM	: 2,800

Construction Materials

Impeller	: Stainless Steel 304
Motor Body	: Stainless Steel 202
Upper Cover	: Stainless Steel 304
Strainer	: Stainless Steel 202
Shaft	: Stainless Steel 410
Diffuser	: Stainless Steel 304
Mechanical Seal	: Carbon vs Ceramic & SIC vs SIC

Applications:

Small and heavy duty dewatering applications in:

- Basements
- Construction Sites
- Mines, Pits & Quarries
- Narrow Coffer



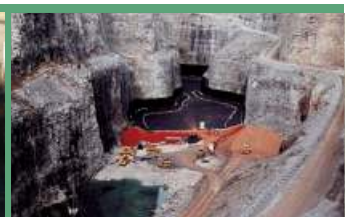
Flooded Basements



Construction Sites



Pits & Quarries



Deep Excavations

KIRLOSKAR BROTHERS LIMITED

(CIN – L29113PN1920PLC000670)

Registered Office:

Udyog Bhavan, Tilak Road,
Pune 411 002, Tel: +91 20 2444 0770
Fax: +91 20 2444 0156

Corporate Office:

'YAMUNA', Survey No. 98 (3-7), Baner, Pune 411045
Tel: +91-2027214444. Email: mktg.dis@kbl.co.in.

www.kirloskarpumps.com

Regional Sales Offices:

Ahmedabad – (079) 26583739.

Chennai – (044) 28157769.

Kochi – (0484) 2206651.

Nagpur – (0712) 2234275.

Bangalore – (080) 23619914.

Dewas – (07272) 227302.

Kolkata – (033) 24615065.

New Delhi – (011) 41501055.

Bhopal – (0755) 4218341.

Jaipur – (0141) 2223830.

Lucknow – (0522) 2326367.

Pune – (020) 24440770.

Bhubaneswar – (0674) 2536421.

Jamshedpur – (0) 9430935888.

Mumbai – (022) 25289320.

Secunderabad – (040) 6687470.



Service Toll Free Number:

1800 103 4443



*Conditions apply. In our constant endeavour to improve the performance of our products / equipment, we reserve the right to make changes or alterations in the same from time to time. As a result, our products / equipment may differ from what is detailed in this publication. For latest information / updates, please get in touch with us.